



[← To the Wavelength](#)

[← To the Package](#)

[Contact](#)

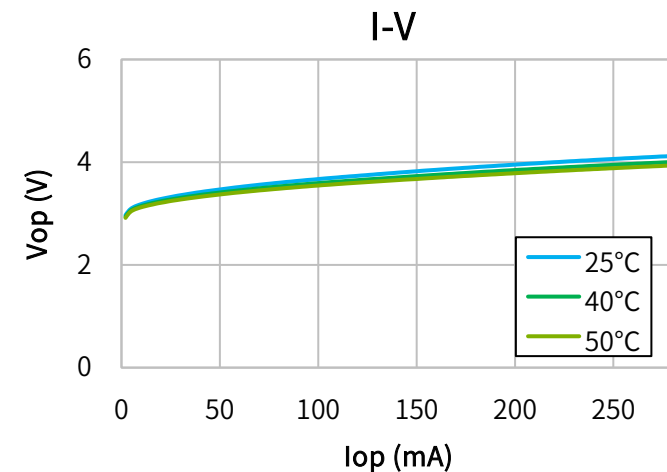
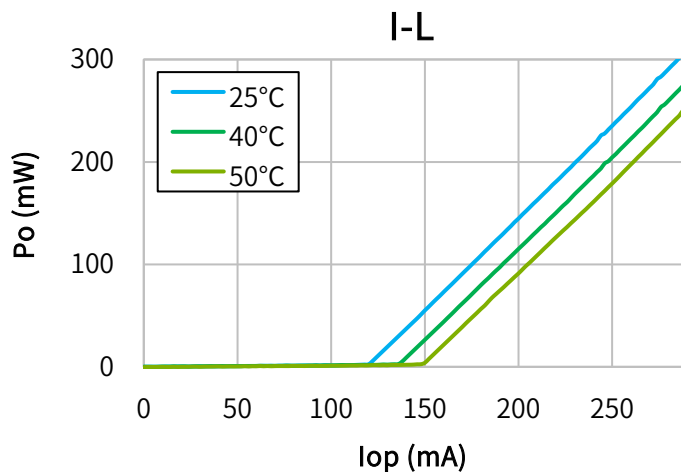
Characteristics

(Tc=25°C, CW)

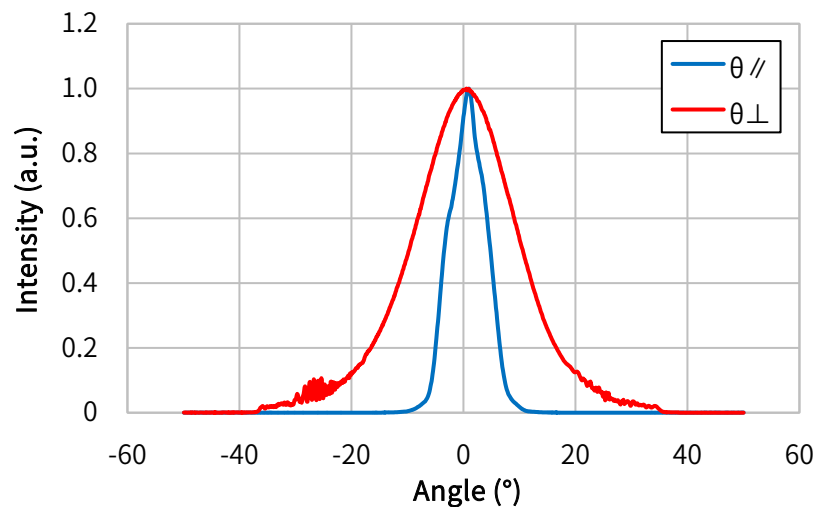
Item	Conditions	Characteristic value (TYP.)
Wavelength (Peak)	Po=300mW	406nm
Output [Max]	—	300mW [350mW]
Threshold current	—	140mA
Operating current	Po=300mW	325mA
Operating voltage	Po=300mW	4.5V
Far Field (1/e ²)	Po=300mW	$\theta_{//}$ 14°, θ_{\perp} 41°

Terminal connections	No.9
Package type	ϕ5.6

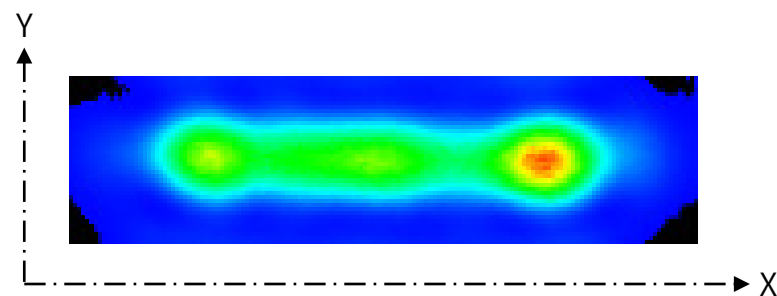
CW I-L, I-V Temperature



Far Field Pattern



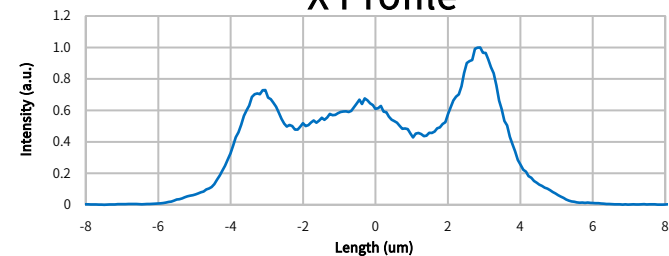
Near Field Pattern



Emitter size

	FWHM (μ m)	1/e (μ m)	1/e ² (μ m)
X	7.4	7.8	8.9
Y	1.1	1.3	1.8

X Profile



Y Profile

