

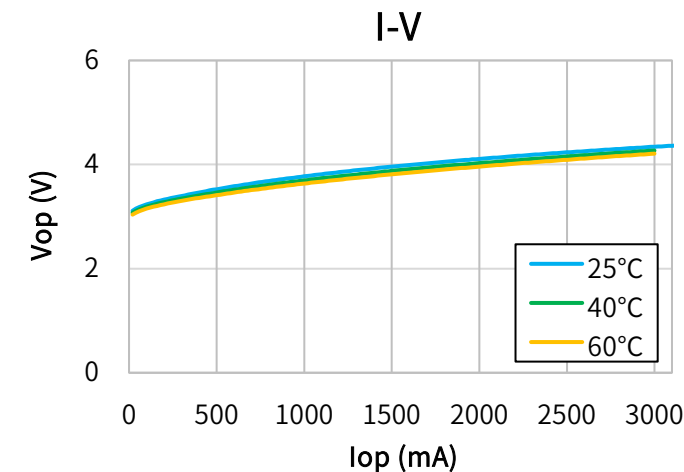
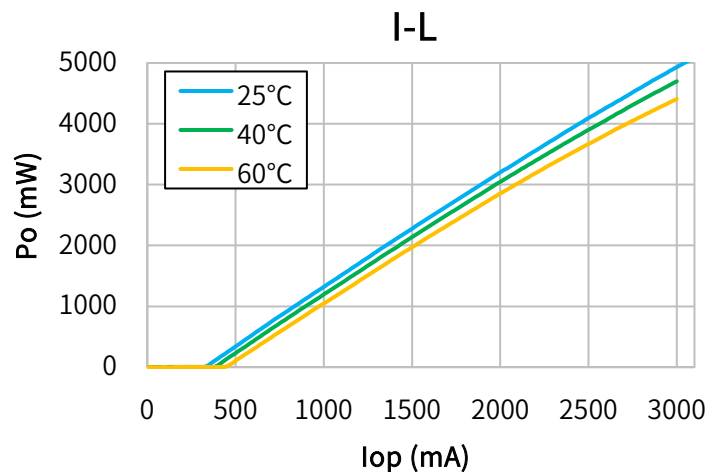


Characteristics

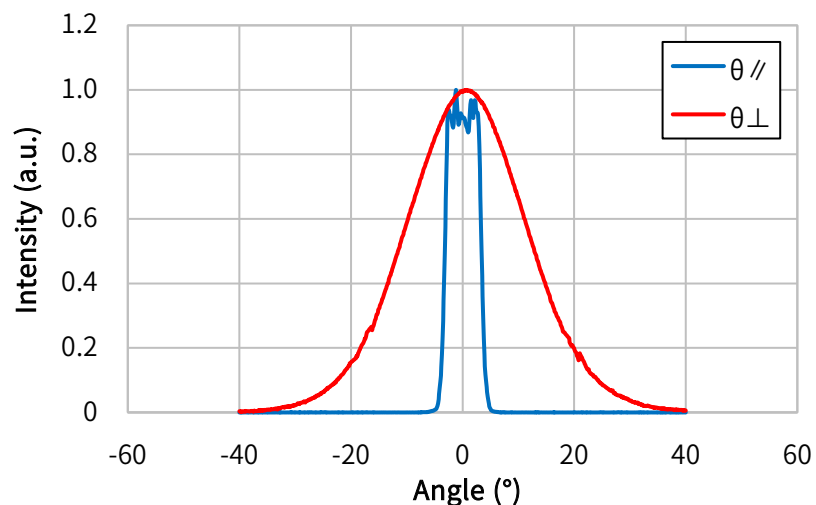
(Tc=25°C, CW)

Item	Conditions	Characteristic value (TYP.)
Wavelength (Peak)	Po=5000mW	450nm
Output	—	5000mW
Threshold current	—	300mA
Operating current	Po=5000mW	2950mA
Operating voltage	Po=5000mW	4.1V
Far Field (1/e ²)	Po=5000mW	$\theta_{//}$ 9°, θ_{\perp} 46°
Terminal connections	No.13	
Package type	ϕ9.0	

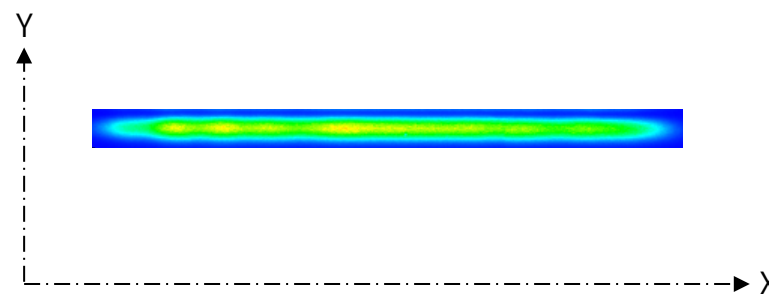
CW I-L, I-V Temperature



Far Field Pattern



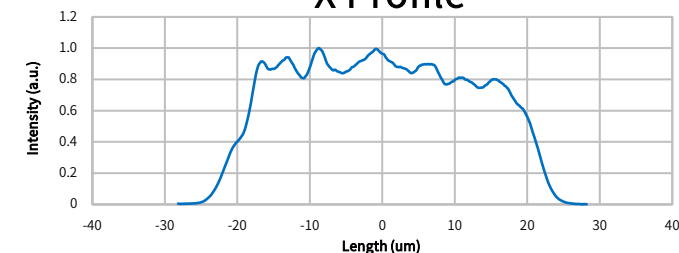
Near Field Pattern



Emitter size

	FWHM (μ m)	1/e (μ m)	1/e ² (μ m)
X	39.3	42.0	45.6
Y	1.6	3.0	3.7

X Profile



Y Profile

