



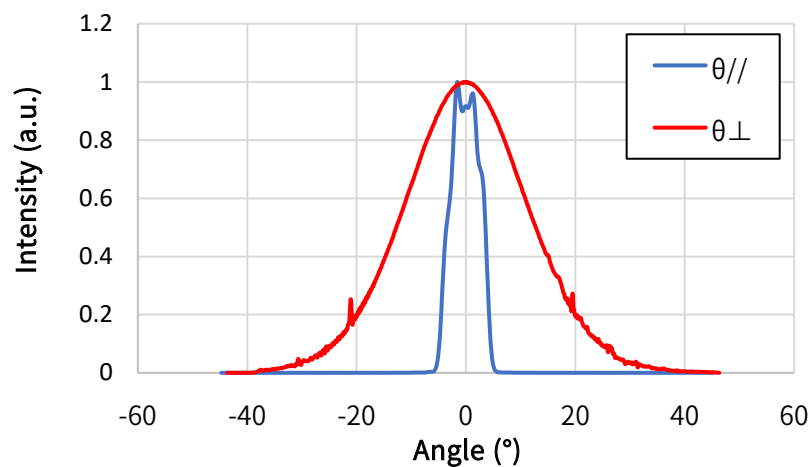
Characteristics

(Tc=25°C, CW)

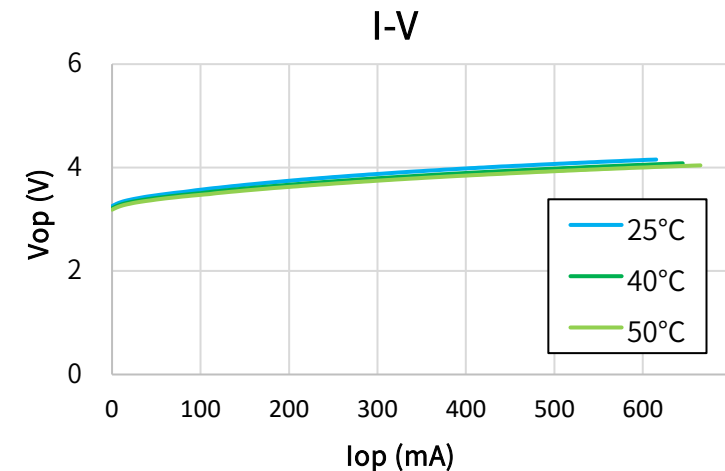
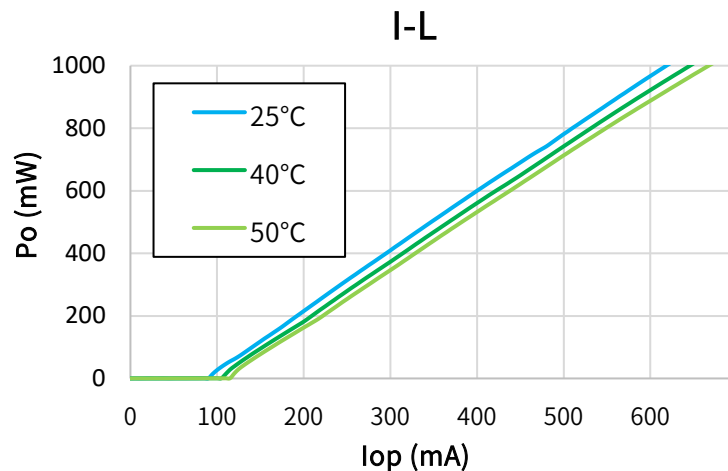
Item	Conditions	Characteristic value (TYP.)
Wavelength (Peak)	Po=1000mW	450nm
Output [Max]	— TC=-10~+25°C TC=+50°C	1000mW [1100mW] [1000mW]
Threshold current	—	100mA
Operating current	Po=1000mW	680mA
Operating voltage	Po=1000mW	4.3V
Far Field (1/e ²)	Po=1000mW	θ// 10°, θ⊥ 45°

Terminal connections	No.9
Package type	φ5.6

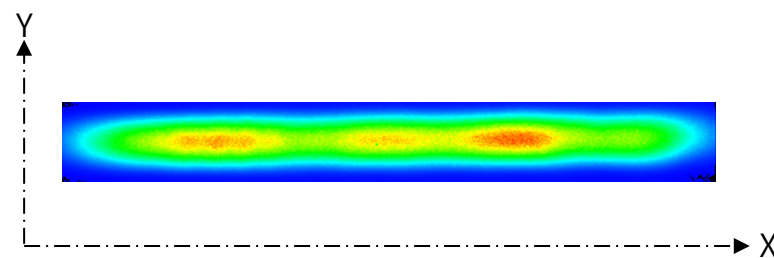
Far Field Pattern



CW I-L, I-V Temperature



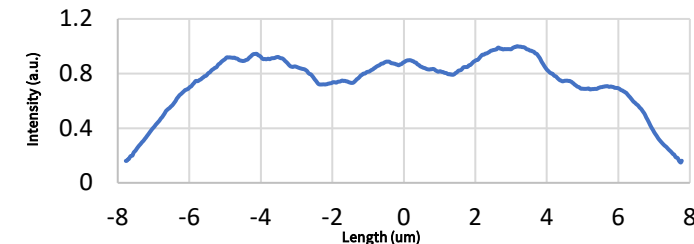
Near Field Pattern



Emitter size

	FWHM (μm)	1/e (μm)	1/e ² (μm)
X	13.5	14.0	15.6
Y	0.8	1.0	1.3

X Profile



Y Profile

