



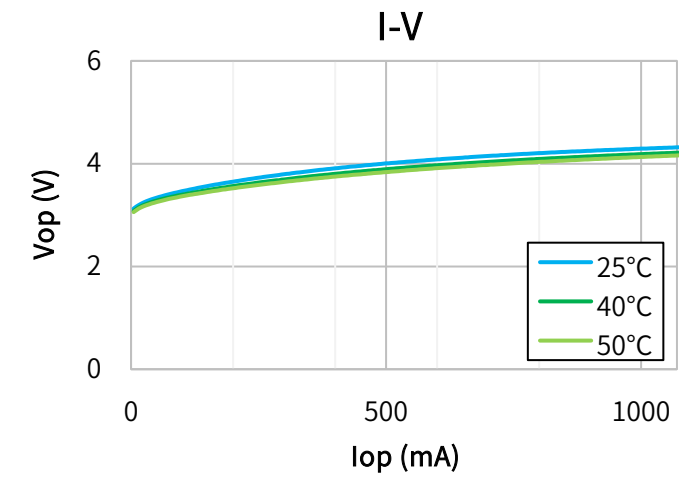
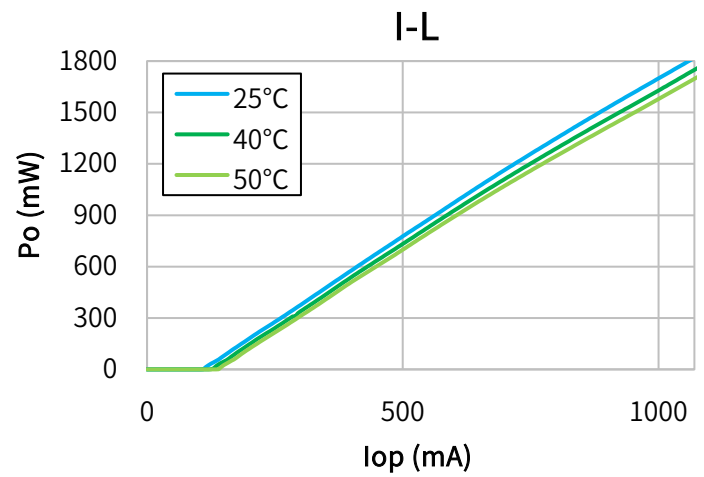
## Characteristics

(Tc=25°C, CW)

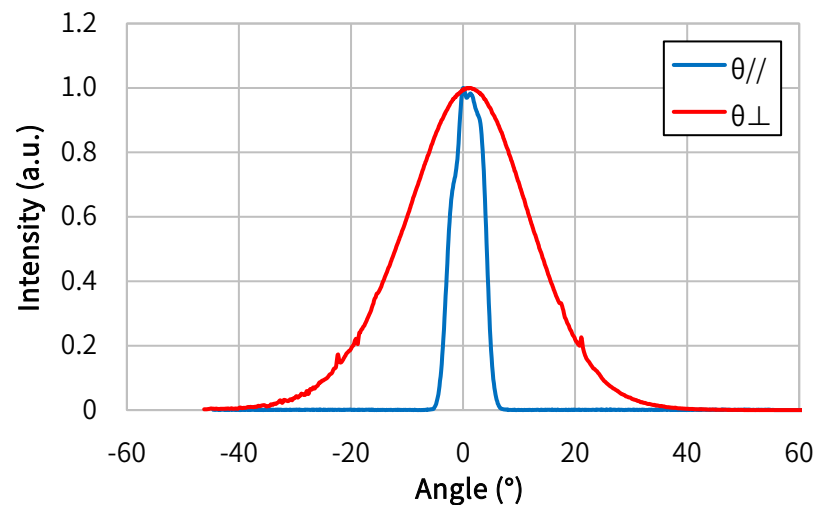
Item	Conditions	Characteristic value (TYP.)
Wavelength (Peak)	Po=1800mW	450nm
Output [Max]	—	1800mW [2000mW]
Threshold current	—	110mA
Operating current	Po=1800mW	1100mA
Operating voltage	Po=1800mW	4.1V
Far Field (FWHM)	Po=1800mW	θ// 7°, θ⊥ 26°

Terminal connections	<a href="#">No.9</a>
Package type	<a href="#">φ5.6</a>

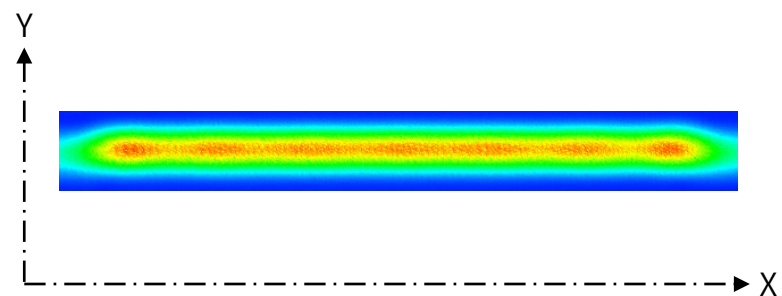
## CW I-L, I-V Temperature



## Far Field Pattern



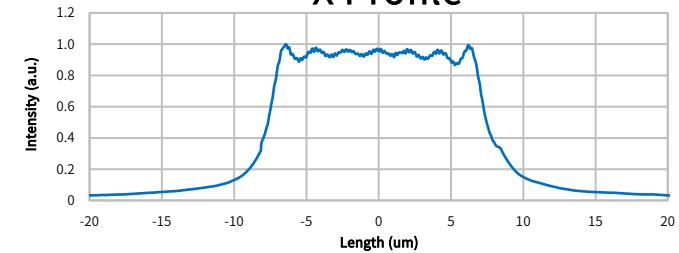
## Near Field Pattern



Emitter size

	FWHM (μm)	1/e (μm)	1/e <sup>2</sup> (μm)
X	15.1	16.1	20.2
Y	0.8	1.0	1.3

## X Profile



## Y Profile

