

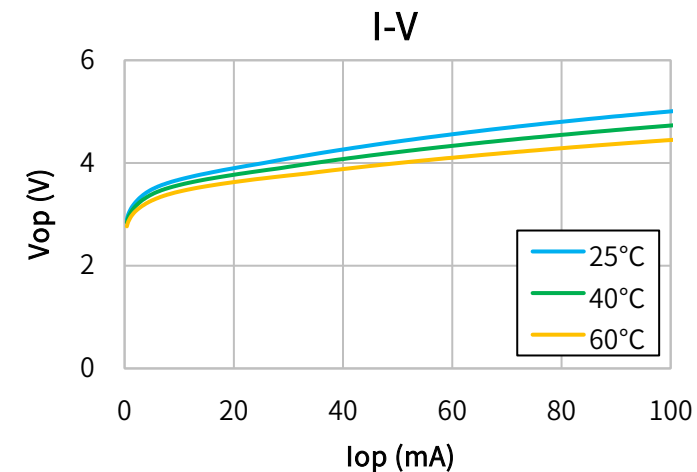
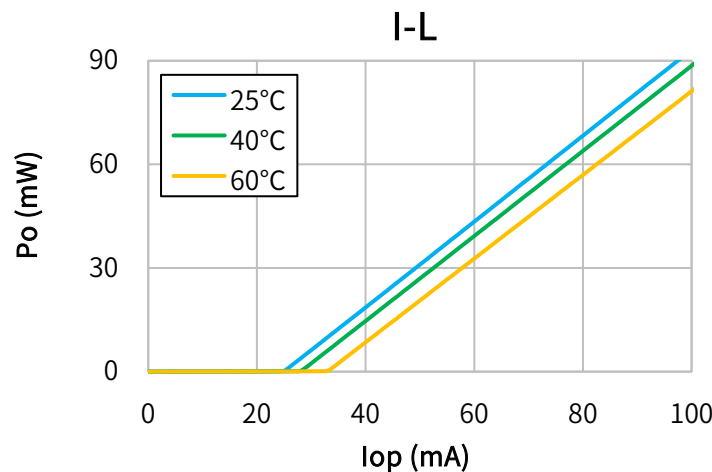


Characteristics

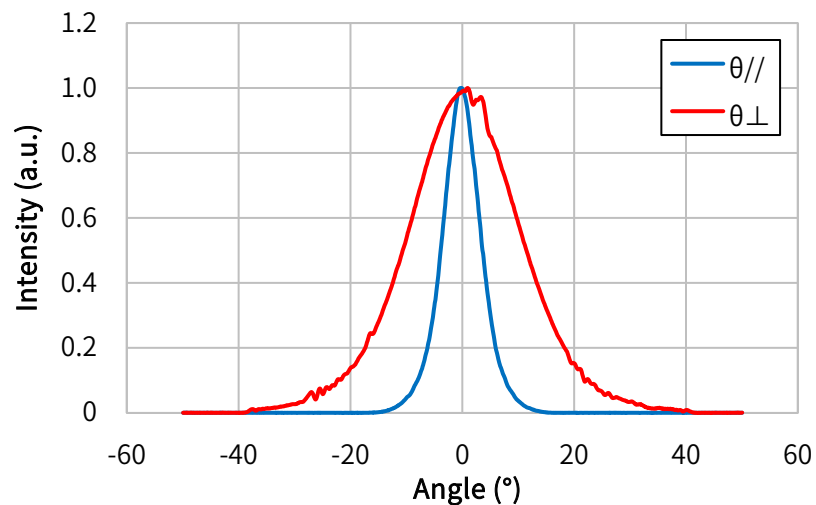
(Tc=25°C, CW)

Item	Conditions	Characteristic value (TYP.)
Wavelength (Peak)	Po=90mW	450nm
Output [Max]	—	90mW[95mW]
Threshold current	—	28mA
Operating current	Po=90mW	100mA
Operating voltage	Po=90mW	5.2V
Far Field (FWHM)	Po=90mW	θ// 9°, θ⊥ 24°
Terminal connections	No.8	
Package type	φ3.8	

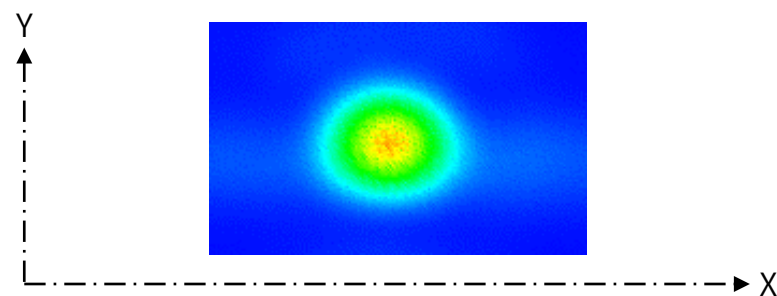
CW I-L, I-V Temperature



Far Field Pattern



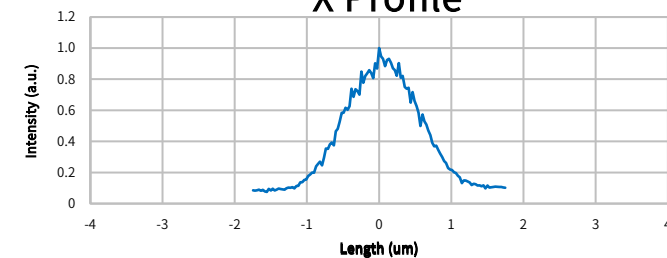
Near Field Pattern



Emitter size

	FWHM (μm)	1/e (μm)	1/e ² (μm)
X	1.2	1.5	2.4
Y	1.0	1.2	1.7

X Profile



Y Profile

