

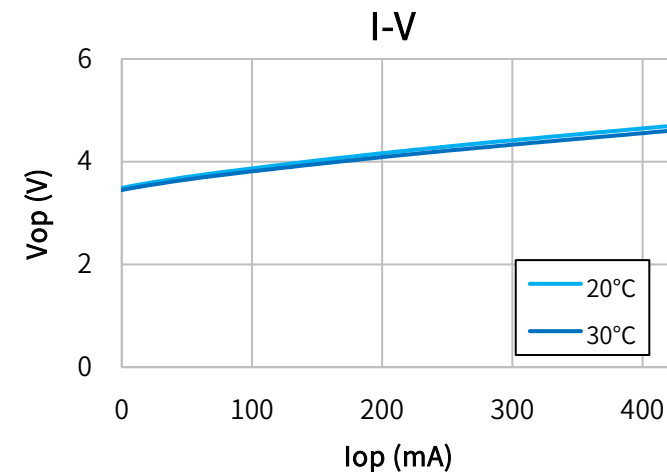
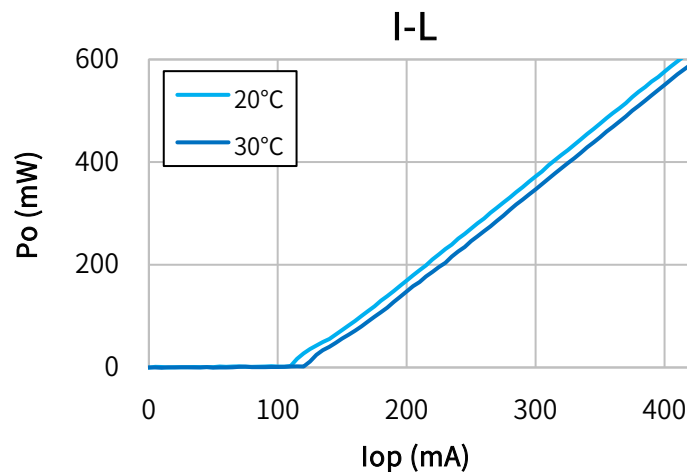


Characteristics

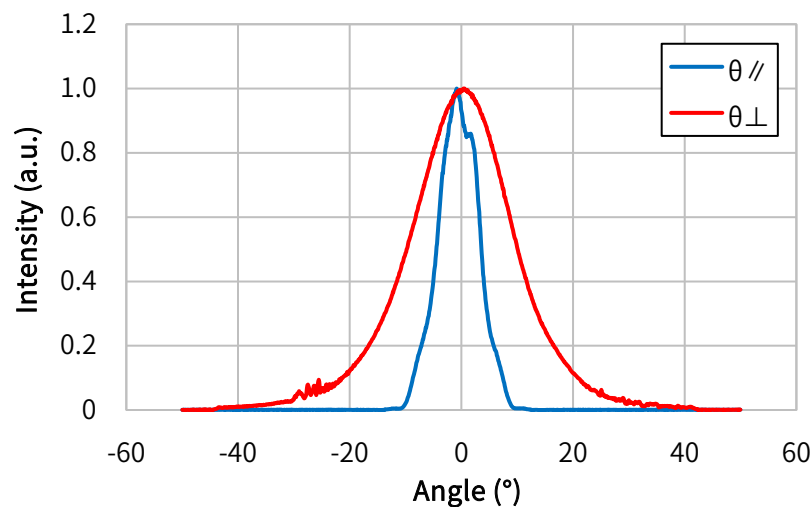
(Tc=25°C, CW)

Item	Conditions	Characteristic value (TYP.)
Wavelength (Peak)	Po=600mW	405nm
Output [Max]	—	600mW [700mW]
Threshold current	—	120mA
Operating current	Po=600mW	420mA
Operating voltage	Po=600mW	4.4V
Far Field (1/e ²)	Po=600mW	θ// 16°, θ⊥ 38°
Terminal connections	No.9	
Package type	φ5.6	

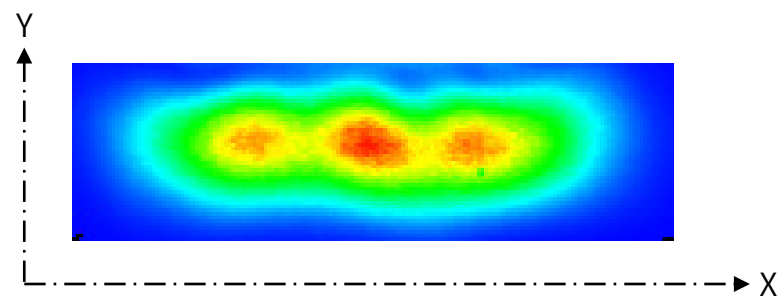
CW I-L, I-V Temperature



Far Field Pattern



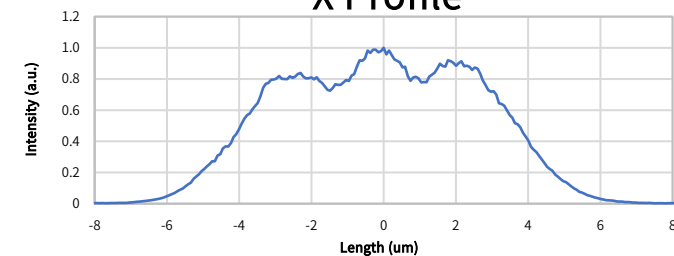
Near Field Pattern



Emitter size

	FWHM (μm)	1/e (μm)	1/e ² (μm)
X	7.7	8.4	10.4
Y	1.8	2.2	3.3

X Profile



Y Profile

