

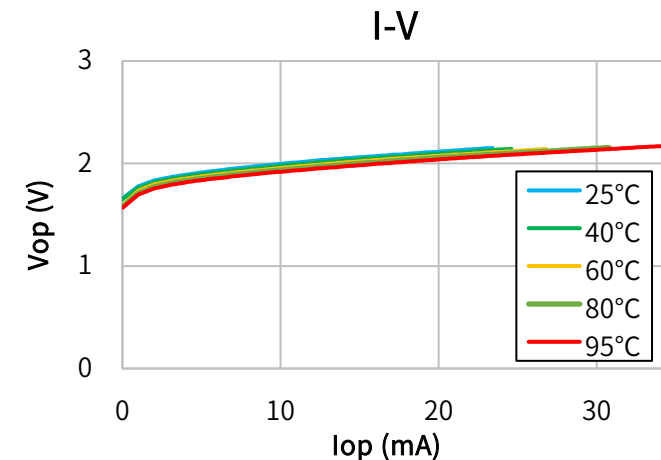
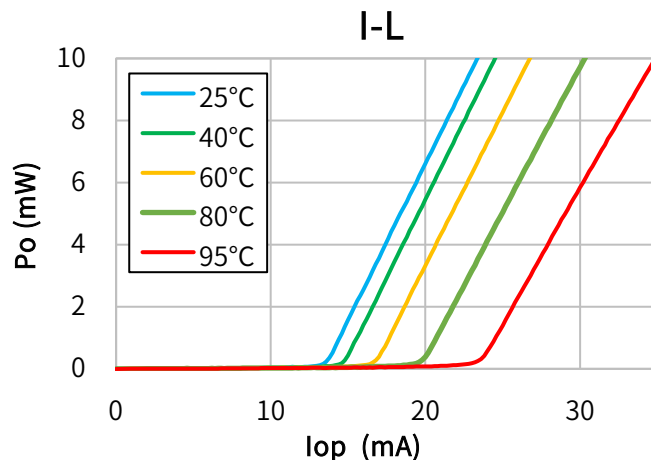


Characteristics

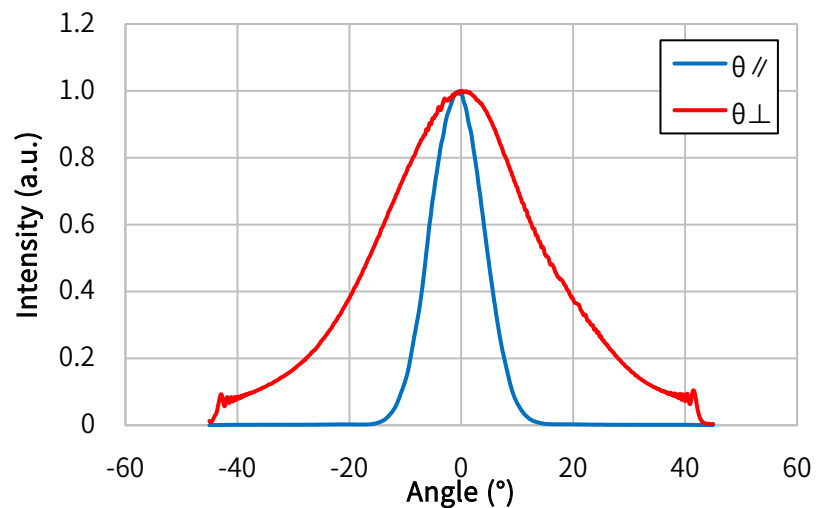
(Tc=25°C, CW)

Item	Conditions	Characteristic value (TYP.)
Wavelength (Peak)	Po=10mW	660nm
Output [Max]	—	10mW[12mW]
Threshold current	—	15mA
Operating current	Po=10mW	24mA
Operating voltage	Po=10mW	2.2V
Far Field (FWHM)	Po=10mW	θ// 12°, θ⊥ 33°
Terminal connections	No.4	φ5.6

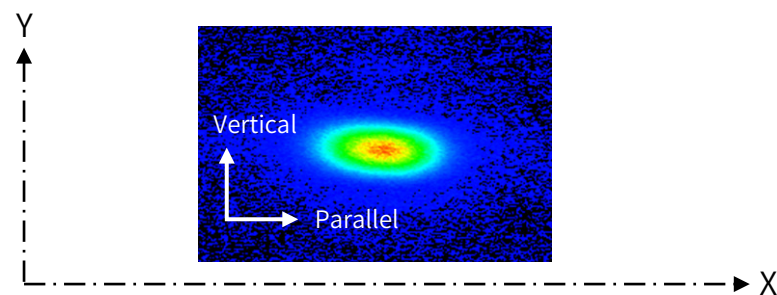
CW I-L, I-V Temperature



Far Field Pattern



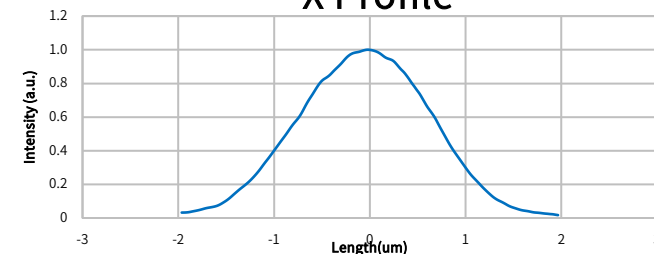
Near Field Pattern



Emitter size

	FWHM (μm)	1/e ² (μm)
X	1.6	2.7
Y	0.7	1.1

X Profile



Y Profile

