

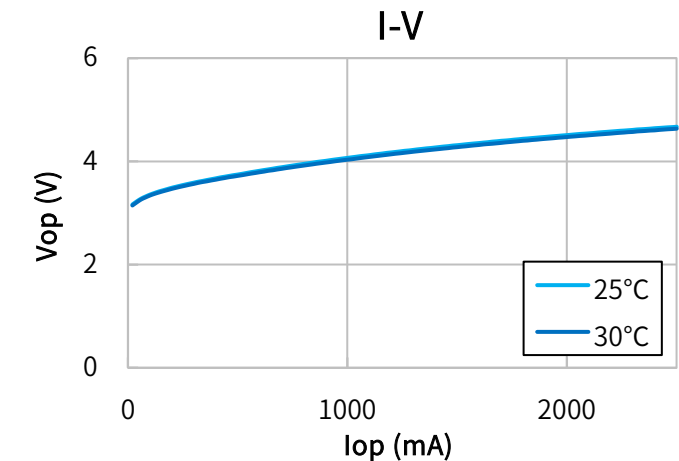
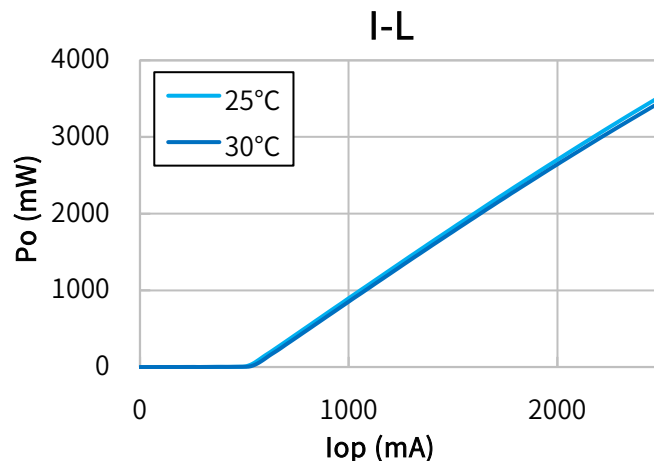


## Characteristics

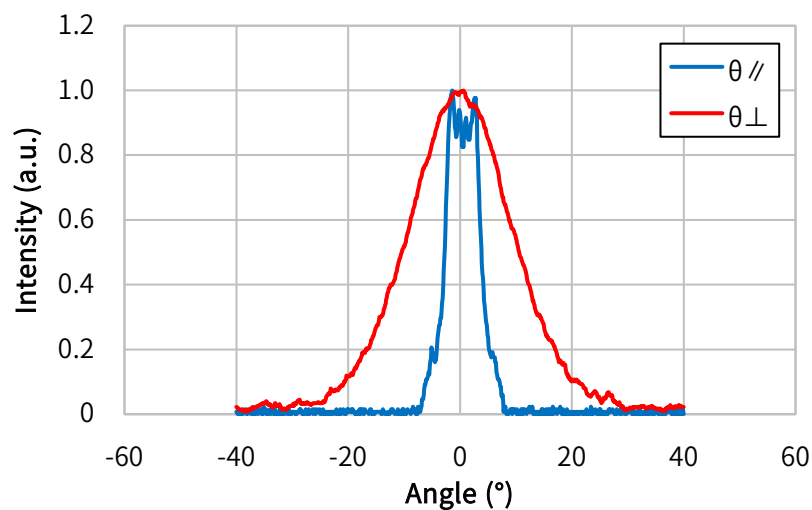
(Tc=25°C, CW)

Item	Conditions	Characteristic value (TYP.)
Wavelength (Peak)	Po=3000mW	405nm
Output	—	3000mW
Threshold current	—	450mA
Operating current	Po=3000mW	1900mA
Operating voltage	Po=3000mW	5.0V
Far Field ( 1/e <sup>2</sup> )	Po=3000mW	θ// 12°, θ⊥ 38°
Terminal connections	<a href="#">No.13</a>	<a href="#">φ9.0</a>

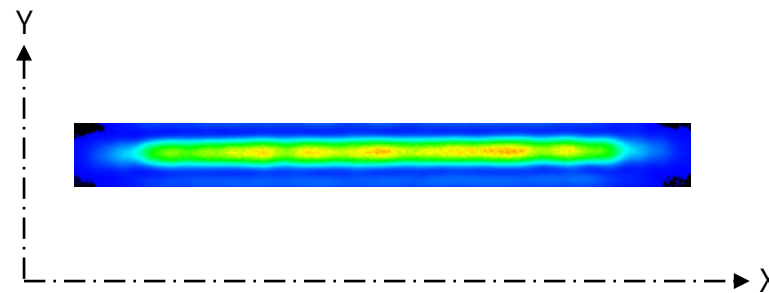
## CW I-L, I-V Temperature



## Far Field Pattern



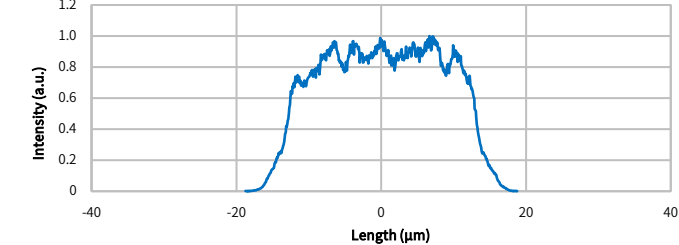
## Near Field Pattern



Emitter size

	FWHM (μm)	1/e (μm)	1/e <sup>2</sup> (μm)
X	25.8	26.7	30.5
Y	1.1	1.2	1.7

## X Profile



## Y Profile

